

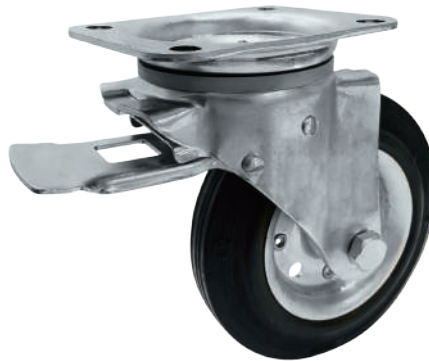


1153-SS Series

Heavy Duty 2" Wide General Purposes Stainless Steel Caster (European Style)

○ Pressed stainless steel caster horn/ housing designed for European market. Swivel easily with high performance total lock brake, suitable for medium and heavy duty logistic equipment.

Load
125-350 kg



» Features



Rear Total Lock

» Wheel Options



QPU on AL Core



Rubber on AL Core



Nylon Wheel



Resilient Resolute Wheel
(Gray Tread)



Black Rubber Wheel
(Plastic Core)



Gray Rubber Wheel
(Plastic Core)



Resilient Resolute Wheel
(Blue Tread)



W Resolute Wheel



Resolute (Round Shape)



Ball Bearing



Plain Bearing



Annular ball bearing




» TOP PLATE SIZE AND BOLT HOLE SPACING

Suffix	Top Plate Size	Bolt Hole Spacing	Attaching Bolt Size
1	137 x 105mm(5-3/8" x 4-1/8")	105 x 80/75mm(4-1/8" x 3-1/8")	10mm (3/8")

» SINGLE BOLT HOLE

Suffix	Centre Hole
1	13mm



 Diameter×Width	 Load	 Material	 Item NO.			 Bearing	 Overall Height	 Offset (mm)	 Swivel radius (mm)
			Fixed	Swivel	Brake				
150 x 40mm (6" x 1-9/16")	280kgs (615 lbs)	Rubber on Aluminum Core	1153-06-22-1	1153-06-22-2	1153-06-22-4	Ball Bearing	190mm (7-1/2")	55mm	Swivel 131mm Swivel W/Rear total lock 131mm
	350kgs (770 lbs)	Nylon Wheel	1153-06-45-1	1153-06-45-2	1153-06-45-4				
	125kgs (275 lbs)	Black Rubber Wheel(Plastic Core)	1153-06-104-1	1153-06-104-2	1153-06-104-4	Plain Bearing			
	125kgs (275 lbs)	Gray Rubber Wheel(Plastic Core)	1153-06-107-1	1153-06-107-2	1153-06-107-4				
150 x 42mm (6" x 1-5/8")	350kgs (770 lbs)	QPU on AL Core (Round)	1153-06-87-1	1153-06-87-2	1153-06-87-4	Ball Bearing			
150 x 50mm (6" x 2")	350kgs (770 lbs)	QPU on AL Core (Flat)	1153-06-87-1	1153-06-87-2	1153-06-87-4	Annular ball bearing	190mm (7-1/2")	55mm	Swivel 131mm Swivel W/Rear total lock 131mm
	272 kgs (600 lbs)	W Resolute	1153-06-48-1	1153-06-48-2	1153-06-48-4				
	204 kgs (450 lbs)	Resolute (Round Shape)	1153-06-44-1	1153-06-44-2	1153-06-44-4				
160 x 40mm (6-5/16" x 1-9/16")	350kgs (770 lbs)	Nylon Wheel	1153-65-45-1	1153-65-45-2	1153-65-45-4	Ball Bearing	200mm (7-7/8")	55mm	Swivel 136mm Swivel W/Rear total lock 136mm
	135kgs (295 lbs)	Black Rubber Wheel(Plastic Core)	1153-65-104-1	1153-65-104-2	1153-65-104-4				
	135kgs (295 lbs)	Gray Rubber Wheel(Plastic Core)	1153-65-107-1	1153-65-107-2	1153-65-107-4	Plain Bearing			
160 x 42mm (6-5/16" x 1-5/8")	350kgs (770 lbs)	QPU on AL Core (Round)	1153-65-87-1	1153-65-87-2	1153-65-87-4	Ball Bearing	200mm (7-7/8")	55mm	Swivel 136mm Swivel W/Rear total lock 136mm
	300kgs (660 lbs)	Rubber on Aluminum Core	1153-65-22-1	1153-65-22-2	1153-65-22-4				
160 x 48mm (6-5/16" x 1-7/8")	300kgs (660 lbs)	Resilient Resolute Wheel (Gray tread)	1153-65-105-1	1153-65-105-2	1153-65-105-4	Ball Bearing			
	300kgs (660 lbs)	Resilient Resolute Wheel (Blue tread)	1153-65-50-1	1153-65-50-2	1153-65-50-4				
160 x 50mm (6-5/16" x 2")	350kgs (770 lbs)	QPU on AL Core (Flat)	1153-65-87-1	1153-65-87-2	1153-65-87-4	Ball Bearing			
180 x 44mm (7" x 1-3/4")	350kgs (770 lbs)	QPU on AL Core (Round)	1153-07-87-1	1153-07-87-2	1153-07-87-4	Ball Bearing	220mm (8-11/16")	55mm	Swivel 145mm Swivel W/Rear total lock 145mm
180 x 50mm (7" x 2")	175kgs (385 lbs)	Black Rubber Wheel(Plastic Core)	1153-07-104-1	1153-07-104-2	1153-07-104-4	Plain Bearing			
	175kgs (385 lbs)	Gray Rubber Wheel(Plastic Core)	1153-07-107-1	1153-07-107-2	1153-07-107-4				
200 x 44mm (8" x 1-3/4")	350kgs (770 lbs)	Rubber on Aluminum Core	1153-08-22-1	1153-08-22-2	1153-08-22-4	Ball Bearing	240mm (9-1/2")	55mm	Swivel 155mm Swivel W/Rear total lock 155mm
200 x 48mm (8" x 1-7/8")	325kgs (715 lbs)	Resilient Resolute Wheel (Gray tread)	1153-08-105-1	1153-08-105-2	1153-08-105-4	Ball Bearing			
	325kgs (715 lbs)	Resilient Resolute Wheel (Blue tread)	1153-08-50-1	1153-08-50-2	1153-08-50-4				
200 x 50mm (8" x 2")	350kgs (770 lbs)	QPU on AL Core (Flat)	1153-08-87-1	1153-08-87-2	1153-08-87-4	Ball Bearing	240mm (9-1/2")	55mm	Swivel 155mm Swivel W/Rear total lock 155mm
	350kgs (770 lbs)	QPU on AL Core (Round)	1153-08-87-1	1153-08-87-2	1153-08-87-4				
	350kgs (770 lbs)	Nylon Wheel	1153-08-45-1	1153-08-45-2	1153-08-45-4				
	205kgs (450 lbs)	Black Rubber Wheel(Plastic Core)	1153-08-104-1	1153-08-104-2	1153-08-104-4	Plain Bearing			
	205kgs (450 lbs)	Gray Rubber Wheel(Plastic Core)	1153-08-107-1	1153-08-107-2	1153-08-107-4				
	306 kgs (675 lbs)	W Resolute	1153-08-48-1	1153-08-48-2	1153-08-48-4	Annular ball bearing			
	272 kgs (600 lbs)	Resolute(Round Shape)	1153-08-44-1	1153-08-44-2	1153-08-44-4				