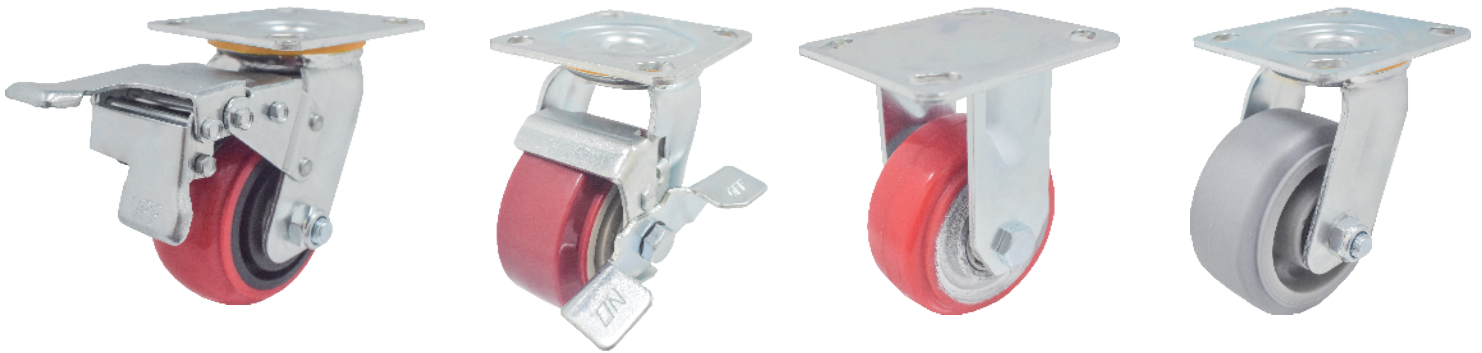




1112-2 Series 2" Wide General Purposes Caster (American Style)

- Swivel easily under heavy load, good for workshop carts. Patented thread guards and dust covers prevent swivel failure caused by build-up of strings between the wheel and fork legs, as well as the dust in the wheel bearing.



» Wheel Options



PPP on Cast



PP on Cast



PPP on Cast



PU on Cast



Ball Bearing



Nylon



CDP



TPR on PP Core






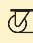



W Resolute

» TOP PLATE SIZE AND BOLT HOLE SPACING

Caster Size	Top Plate Size	Bolt Hole Spacing	Attaching Bolt Size
4, 5, 6, 8	100 x 95.5mm (4" x 3-3/4")	70.3 x 81.4mm (2-3/4"~3-1/4")	M12



 Diameter×Width	 Load	 Material	 Item No.			 Bearing	 Overall Height	 Swivel radius
			Fixed	Swivel	Brake			
100mm x 48mm (4" x 1-7/8")	150 kgs (330 lbs)	PPP on Cast	1112-040-29-1	1112-040-29-2	1112-040-29-4	Ball Bearing	136mm (5-3/8")	Swivel 88.5 mm Swivel W/Side Brake 137.7mm Swivel W/AK Lock Brake 112 mm
100mm x 48mm (4" x 1-7/8")	150 kgs (330 lbs)	PP on Cast	1112-040-29-1	1112-040-29-2	1112-040-29-4			
100mm x 48mm (4" x 1-7/8")	150 kgs (330 lbs)	PPP on Cast	1112-040-29-1	1112-040-29-2	1112-040-29-4			
100mm x 48mm (4" x 1-7/8")	250 kgs (550 lbs)	PU on Cast	1112-040-33-1	1112-040-33-2	1112-040-33-14			
100mm x 32mm (4" x 1-1/4")	200 kgs (440 lbs)	Nylon	1112-040-07-1	1112-040-07-2	1112-040-07-4			
100mm x 32mm (4" x 1-1/4")	150 kgs (330 lbs)	CDP	1112-040-44-1	1112-040-44-2	1112-040-44-4			
100mm x 50mm (4" x 2")	135 kgs (297 lbs)	TPR on PP Core	1112-040-26-1	1112-040-26-2	1112-040-26-4			
100mm x 50mm (4" x 2")	180 kgs (396 lbs)	W Resolute	1112-040-45-1	1112-040-45-2	1112-040-45-4			
125mm x 48mm (5" x 1-7/8")	180 kgs (396 lbs)	PPP on Cast	1112-050-29-1	1112-050-29-2	1112-050-29-4	Ball Bearing	162mm (6-3/8")	Swivel 106 mm Swivel W/Side Brake 139.2mm Swivel W/AK Lock Brake 116 mm
125mm x 48mm (5" x 1-7/8")	180 kgs (396 lbs)	PP on Cast	1112-050-29-1	1112-050-29-2	1112-050-29-4			
125mm x 48mm (5" x 1-7/8")	180 kgs (396 lbs)	PPP on Cast	1112-050-29-1	1112-050-29-2	1112-050-29-4			
125mm x 48mm (5" x 1-7/8")	290 kgs (639 lbs)	PU on Cast	1112-050-33-1	1112-050-33-2	1112-050-33-14			
125mm x 40mm (5" x 1-5/8")	250 kgs (551 lbs)	Nylon	1112-050-07-1	1112-050-07-2	1112-050-07-4			
125mm x 40mm (5" x 1-5/8")	200 kgs (440 lbs)	CDP	1112-050-44-1	1112-050-44-2	1112-050-44-4			
125mm x 50mm (5" x 2")	170 kgs (374 lbs)	TPR on PP Core	1112-050-26-1	1112-050-26-2	1112-050-26-4			
127mm x 50mm (5" x 2")	227 kgs (500 lbs)	W Resolute	1112-050-45-1	1112-050-45-2	1112-050-45-4			
150mm x 48mm (6" x 1-7/8")	200 kgs (440 lbs)	PPP on Cast	1112-060-29-1	1112-060-29-2	1112-060-29-4	Ball Bearing	190mm (7-1/2")	Swivel 123.5 mm Swivel W/Side Brake 150.8 mm Swivel W/AK Lock Brake 123.5 mm
150mm x 48mm (6" x 1-7/8")	200 kgs (440 lbs)	PP on Cast	1112-060-29-1	1112-060-29-2	1112-060-29-4			
150mm x 48mm (6" x 1-7/8")	200 kgs (440 lbs)	PPP on Cast	1112-060-29-1	1112-060-29-2	1112-060-29-4			
150mm x 48mm (6" x 1-7/8")	330 kgs (727 lbs)	PU on Cast	1112-060-33-1	1112-060-33-2	1112-060-33-14			
150mm x 40mm (6" x 1-5/8")	350 kgs (771 lbs)	Nylon	1112-060-07-1	1112-060-07-2	1112-060-07-4			
150mm x 40mm (6" x 1-5/8")	250 kgs (551 lbs)	WCDP	1112-060-44-1	1112-060-44-2	1112-060-44-4			
150mm x 50mm (6" x 2")	200 kgs (440 lbs)	TPR on PP Core	1112-060-26-1	1112-060-26-2	1112-060-26-4			
151mm x 50mm (6" x 2")	270 kgs (595 lbs)	W Resolute	1112-060-45-1	1112-060-45-2	1112-060-45-4			
200mm x 48mm (8" x 1-7/8")	220 kgs (485 lbs)	PPP on Cast	1112-080-29-1	1112-080-29-2	1112-080-29-4	Ball Bearing	240.5mm (9-1/2")	Swivel 158 mm Swivel W/Side Brake 158 mm Swivel W/AK Lock Brake 158 mm
200mm x 48mm (8" x 1-7/8")	220 kgs (485 lbs)	PP on Cast	1112-080-29-1	1112-080-29-2	1112-080-29-4			
200mm x 48mm (8" x 1-7/8")	220 kgs (485 lbs)	PPP on Cast	1112-080-29-1	1112-080-29-2	1112-080-29-4			
200mm x 48mm (8" x 1-7/8")	380 kgs (837 lbs)	PU on Cast	1112-080-33-1	1112-080-33-2	1112-080-33-14			
200mm x 48mm (8" x 1-7/8")	400 kgs (881 lbs)	Nylon	1112-080-07-1	1112-080-07-2	1112-080-07-4			
200mm x 48mm (8" x 1-7/8")	300 kgs (661 lbs)	WCDP	1112-080-44-1	1112-080-44-2	1112-080-44-4			
200mm x 50mm (8" x 2")	270 kgs (595 lbs)	TPR on PP Core	1112-080-26-1	1112-080-26-2	1112-080-26-4			
202mm x 50mm (8" x 2")	300 kgs (661 lbs)	W Resolute	1112-080-45-1	1112-080-45-2	1112-080-45-4			