



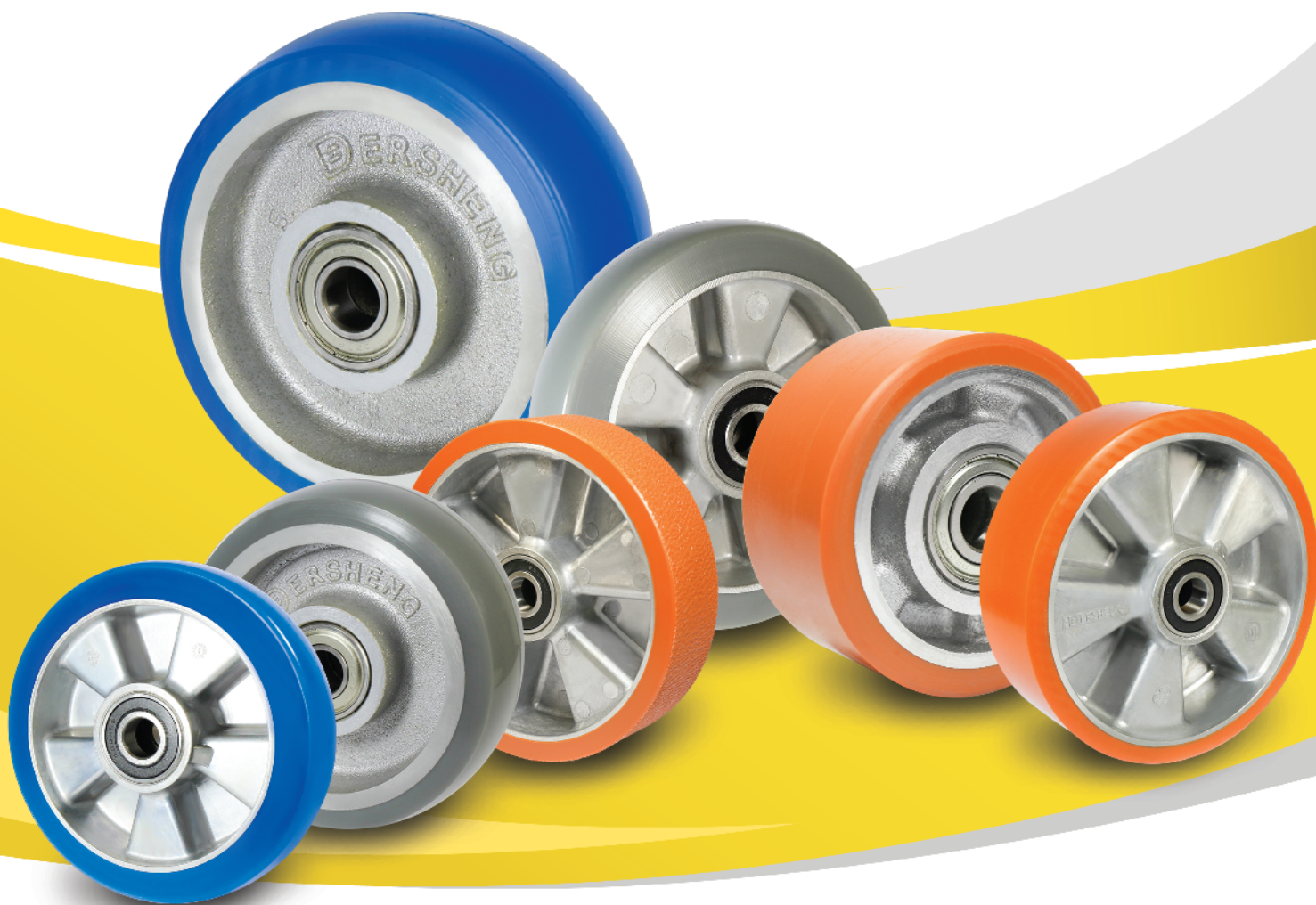


## AQPU系列

## 重型轮

## QPU外包+铝芯

	温度范围	<div><div></div><div></div><div></div><div></div><div></div></div>	-30°C to +70°C
	滚动顺畅	<div><div></div><div></div><div></div><div></div><div></div></div>	非常优秀
	音量	<div><div></div><div></div><div></div><div></div><div></div></div>	良好
	保护地板	<div><div></div><div></div><div></div><div></div><div></div></div>	良好



### 轮面

QPU是一种弹性很好的PU材质，使用本材质的轮子不但会降低推动阻力，还会提高机台的操控度。QPU有三种硬度，分别是75度、85度、90度，均具有极高的弹跳力。得胜QPU轮有着优秀的抗水解特性，适用于热带地区及潮湿的工作环境。

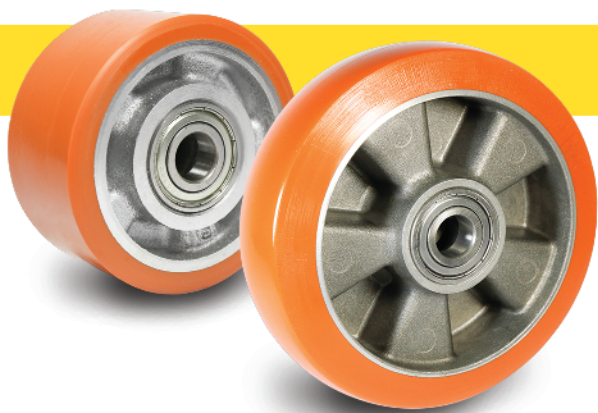
### 轮框

内框：铝芯

### 特色

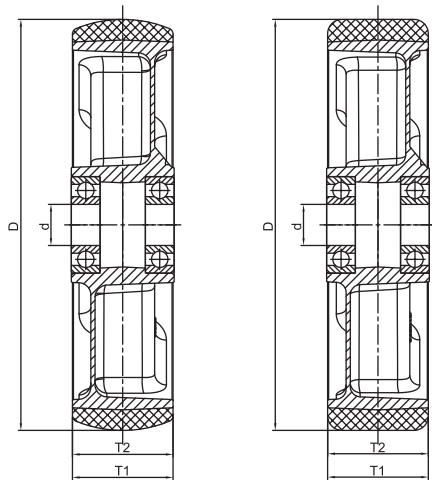
- 抗化学、溶剂及侵蚀
- 耐磨
- 抗微生物
- 防穿刺
- 低阻力
- 适用环境温度：-30°C~+70°C
- 在正常使用情况下，无需维修





硬度：90°Shore A (PANTONE 1605C)

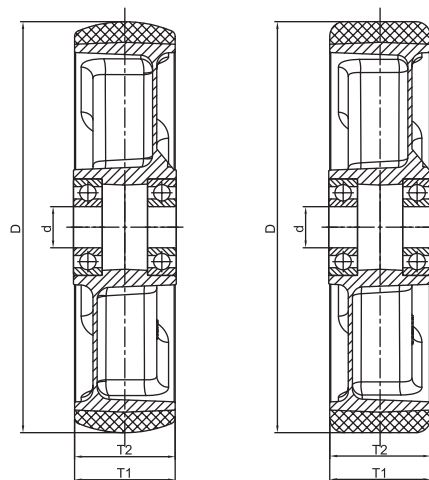
品号	轮径 (D) [mm]	轮宽 (T2) [mm]	载重 [kg (lbs)]	轴承内径 ø(d) [mm]	中宽 (T1) [mm]	轮面	轴承
12036003130100	75	29	150kgs (330lbs)	17	29	圆弧	精密滚珠 轴承
12036003135771	75	30	160kgs (352lbs)	12	32		
12036003135871	75	30	160kgs (352lbs)	15	32		
12036003135171	80	30	180kgs (396lbs)	12	32		
12036003135271	80	30	180kgs (396lbs)	15	32		
12036004135171	100	31	230kgs (507lbs)	15	32		
12036004135271	100	31	230kgs (507lbs)	17	32		
12036004159171	100	36	325kgs (716lbs)	12	36		
12036004159271	100	36	325kgs (716lbs)	15	36		
12036004155171	100	40	350kgs (771lbs)	12	40		
12036004155271	100	40	350kgs (771lbs)	15	40		
12036005135171	125	31	280kgs (617lbs)	15	32		
12036005135271	125	31	280kgs (617lbs)	17	32		
12036005155171	125	40	350kgs (771lbs)	15	40		
12036005155271	125	40	350kgs (771lbs)	17	40		
12036005180100	125	40	350kgs (771lbs)	20	49		
12036006185171	150	42	450kgs (992lbs)	17	42		
12036006185271	150	42	450kgs (992lbs)	20	42		
12036056185171	160	42	500kgs (1102lbs)	17	42		
12036056185271	160	42	500kgs (1102lbs)	20	42		
12036007185171	180	44	600kgs (1323lbs)	20	44	平面	精密滚珠 轴承
12036007185271	180	44	600kgs (1323lbs)	25	44		
12036008205171	200	50	800kgs (1764lbs)	20	50		
12036008205271	200	50	800kgs (1764lbs)	25	50		
12036004205171	100	50	300kgs (661lbs)	17	50		
12036004205271	100	50	300kgs (661lbs)	20	50		
12036005205171	125	50	450kgs (992lbs)	17	50		
12036005205271	125	50	450kgs (992lbs)	20	50		
12036006205171	150	50	500kgs (1102lbs)	17	50		
12036006205271	150	50	500kgs (1102lbs)	20	50		
12036056005171	160	50	550kgs (1213lbs)	17	50		
12036056205271	160	50	550kgs (1213lbs)	20	50		
12036008205671	200	50	800kgs (1764lbs)	20	50		
12036008205771	200	50	800kgs (1764lbs)	25	50		



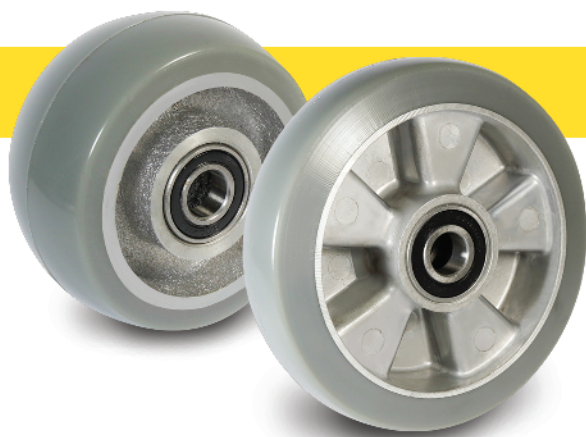


硬度：85°Shore A (PANTONE 2747C)

品号	轮径 (D) [mm]	轮宽 (T2) [mm]	载重 [kg(lbs)]	轴承内径 Ø(d) [mm]	中宽 (T1) [mm]	轮面	轴承
12036003130300	75	29	150kgs (330lbs)	17	29	圆弧	精密滚珠 轴承
12036003135971	75	30	160kgs (352lbs)	12	32		
12036003139171	75	30	160kgs (352lbs)	15	32		
12036003135371	80	30	180kgs (396lbs)	12	32		
12036003135471	80	30	180kgs (396lbs)	15	32		
12036004135371	100	31	220kgs (485lbs)	15	32		
12036004135471	100	31	220kgs (485lbs)	17	32		
12036004159371	100	36	300kgs (661lbs)	12	36		
12036004159471	100	36	300kgs (661lbs)	15	36		
12036004155571	100	40	325kgs (716lbs)	12	40		
12036004155671	100	40	325kgs (716lbs)	15	40		
12036005135371	125	31	250kgs (551lbs)	15	32		
12036005135471	125	31	250kgs (551lbs)	17	32		
12036005155371	125	40	350kgs (771lbs)	15	40		
12036005155471	125	40	350kgs (771lbs)	17	40		
12036005180200	125	40	300kgs (661lbs)	20	49		
12036006185371	150	42	425kgs (937lbs)	17	42		
12036006185471	150	42	425kgs (937lbs)	20	42		
12036056185371	160	42	475kgs (1047lbs)	17	42		
12036056185471	160	42	475kgs (1047lbs)	20	42		
12036007185371	180	44	550kgs (1213lbs)	20	44	平面	
12036007185471	180	44	550kgs (1213lbs)	25	44		
12036008205371	200	50	750kgs (1653lbs)	20	50		
12036008205471	200	50	750kgs (1653lbs)	25	50		
12036004205371	100	50	300kgs (661lbs)	17	50		
12036004205471	100	50	300kgs (661lbs)	20	50		
12036005205371	125	50	450kgs (992lbs)	17	50		
12036005205471	125	50	450kgs (992lbs)	20	50		
12036006205371	150	50	500kgs (1102lbs)	17	50		
12036006205471	150	50	500kgs (1102lbs)	20	50		
12036056205371	160	50	550kgs (1213lbs)	17	50		
12036056205471	160	50	550kgs (1213lbs)	20	50		
12036008205871	200	50	750kgs (1653lbs)	20	50		
12036008205971	200	50	750kgs (1653lbs)	25	50		







硬度：75°Shore A (PANTONE 425C)

品号	轮径 (D) [mm]	轮宽 (T2) [mm]	载重 [kg (lbs)]	轴承内径 Ø(d) [mm]	中宽 (T1) [mm]	轮面	轴承
12036003130400	75	29	150kgs (330lbs)	17	29	圆弧	精密滚珠 轴承
12036003139271	75	30	160kgs (352lbs)	12	32		
12036003139371	75	30	160kgs (352lbs)	15	32		
12036003135571	80	30	180kgs (396lbs)	12	32		
12036003135671	80	30	180kgs (396lbs)	15	32		
12036004135571	100	31	200kgs (440lbs)	15	32		
12036004135671	100	31	200kgs (440lbs)	17	32		
12036004159571	100	36	270kgs (595lbs)	12	36		
12036004159671	100	36	270kgs (595lbs)	15	36		
12036004155771	100	40	300kgs (661lbs)	12	40		
12036004155871	100	40	300kgs (661lbs)	15	40		
12036005135571	125	31	230kgs (507lbs)	15	32		
12036005135671	125	31	230kgs (507lbs)	17	32		
12036005155571	125	40	350kgs (771lbs)	15	40		
12036005155671	125	40	350kgs (771lbs)	17	40		
12036005180300	125	40	250kgs (551lbs)	20	49		
12036006185571	150	42	400kgs (881lbs)	17	42		
12036006185671	150	42	400kgs (881lbs)	20	42		
12036056185571	160	42	450kgs (991lbs)	17	42		
12036056185671	160	42	450kgs (991lbs)	20	42		
12036007185571	180	44	500kgs (1102lbs)	20	44	平面	
12036007185671	180	44	500kgs (1102lbs)	25	44		
12036008205571	200	50	700kgs (1543lbs)	20	50		
12036008209671	200	50	700kgs (1543lbs)	25	50		
12036004205571	100	50	300kgs (661lbs)	17	50		
12036004205671	100	50	300kgs (661lbs)	20	50		
12036005205571	125	50	450kgs (992lbs)	17	50		
12036005205671	125	50	450kgs (992lbs)	20	50		
12036006205571	150	50	500kgs (1102lbs)	17	50		
12036006205671	150	50	500kgs (1102lbs)	20	50		
12036056205571	160	50	550kgs (1213lbs)	17	50		
12036056205671	160	50	550kgs (1213lbs)	20	50		
12036008209871	200	50	700kgs (1543lbs)	20	50		
12036008209971	200	50	700kgs (1543lbs)	25	50		

