



1204 Series

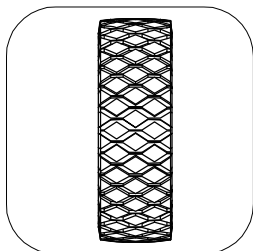
空心胎/实心胎割草机轮

Semi-Pneumatic & Solid Rubber Wheel

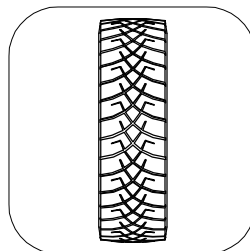
- 适用于割草机, 木工机械, 高压清洗机, 发电机, 搬运车与氧气车等
有多样的胎纹供选择, 请联络工厂。
轮框材质有铁框 (可做烤漆或电镀处理) 及塑框可供选择
各种OEM尺寸及设计可以依据产品设计需求生产
- Good for lawn mowers, wooden machinery, generators, two-wheeled carts, etc.
Various Tread patterns available, please consult the factory.
Rims can be plastic or steel (painted or zinc-plated)
OEM requests and tailored-made wheels in all sizes are welcome.



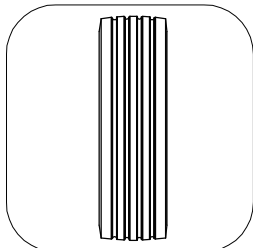
» 特色区 Features



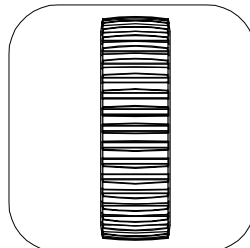
1) 钻纹
Diamond Tread Profile



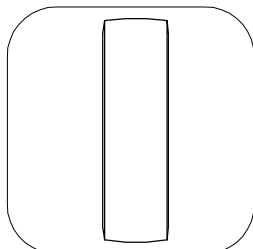
2) X纹
X Tread Profile



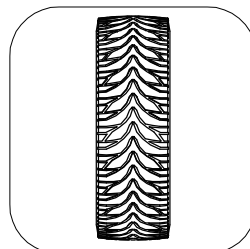
3) 直纹
Rib Tread Profile



4) 齿纹
Gear Tread Profile



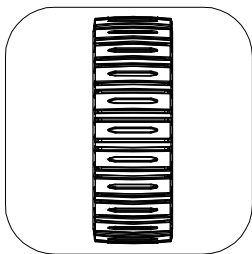
5) 光面
Smooth Tread Profile



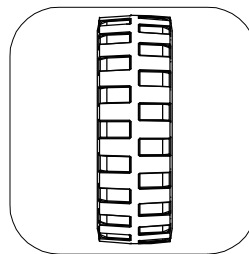
6) V纹
V Tread Profile



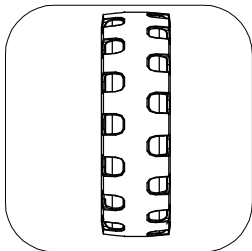
特色区 Features



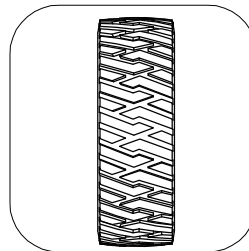
7) G-2纹
G-2 Tread Profile



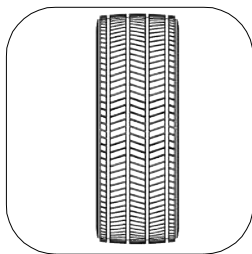
8) 方块纹
Stud Tread Profile



9) G-3纹
G-3 Tread Profile



10) L纹
Tread Profile



11) 横纹
Lateral Tread Profile

实心胎橡胶轮 (铁框-正心) Solid Rubber Wheel with Steel Rim (Ce ntered Hub)

轮径 Wheel Diameter	轮宽 Wheel Width	中宽(含轴承) Hub Length (with bearing)	轴承 Ball Bearing							胎纹 Tread Profile	厚胶/薄胶 Tread Thickness	铁框颜色 Hub Color						荷重 Load
			精密滚珠轴承 Precision ball bearing				A珠 Flanged ball bearing					黑 Black	白 White	红 Red	银灰 Silver	镀锌 Zinc Plated	黄 Yellow	
			12mm	6002 (15mm)	6203 (17mm)	6904 (20mm)	1/2" (12.7mm)	5/8" (15.88mm)	3/4" (19.05mm)									
6"	1-1/2" (37mm)	1-17/32" (39mm)					V			直纹 Rib	厚胶 Thick Tread		V	V				60kg (130 lbs)
		1-27/32" (47mm)					V	V	V	直纹 Rib			V	V				
7"	1-1/2" (35mm)	2" (51mm)					V	V	V	直纹 Rib	厚胶 Thick Tread		V	V				70kg (155 lbs)
8"	1-3/4" (42mm)	2" (51mm)					V	V	V	直纹 Rib	厚胶 Thick Tread		V	V				70kg (155 lbs)
	1-3/4" (42 mm)	2-1/4" (57mm)					V			直纹 Rib			V	V				
8"	2-1/2" (62mm)	2-11/64" (55.2mm)						V	V	直纹 Rib	厚胶 Thick Tread			V		V		70kg (155 lbs)
10"	1-3/4" (41mm)	2-3/16" (55.5mm)					V	V	V	直纹 Rib	厚胶 Thick Tread		V	V	V			70kg (155 lbs)
10"	2-1/2" (57mm)	2-3/4" (70mm)						V	V	直纹 Rib	厚胶 Thick Tread			V				110kg (240 lbs)
10"	2-3/4" (65mm)	2-3/4" (70mm)						V	V	直纹 Rib	厚胶 Thick Tread				V	V		115kg (255 lbs)
12"	1-3/4" (43mm)	2-21/64" (59mm)					V			直纹 Rib	厚胶 Thick Tread			V				70kg (155 lbs)



轮径 Wheel Diameter	轮宽 Wheel Width	中宽(含轴承) Hub Length (with bearing)	轴承 Ball Bearing							胎纹 Tread Profile	厚胶/薄胶 Tread Thickness	铁框颜色 Hub Color						荷重 Load
			精密滚珠轴承 Precision ball bearing				A珠 Flanged ball bearing					黑 Black	白 White	红 Red	银灰 Silver	镀锌 Zinc Plated	黄 Yellow	
			12mm	6002 (15mm)	6203 (17mm)	6904 (20mm)	1/2" (12.7mm)	5/8" (15.88mm)	3/4" (19.05mm)									
6"	1-1/2" (36mm)	1-29/64" (37mm)					V	V	V	直纹 Rib	厚胶 Thick Tread		V	V			60kg (130 lbs)	
7"	1-1/2" (35mm)	1-31/64" (37.5mm)					V	V	V	直纹 Rib	厚胶 Thick Tread		V	V			70kg (155 lbs)	
8"	1-3/4" (42 mm)	1-1/2" (38mm)		V						直纹 Rib	厚胶 Thick Tread		V				70kg (155 lbs)	
	1-3/4" (42mm)	1-31/64" (37.5mm)					V	V	V	直纹 Rib			V	V				
10"	1-3/4" (41mm)	1-39/64" (41mm)					V	V	V	直纹 Rib	厚胶 Thick Tread		V	V			70kg (155 lbs)	
10"	2-1/2" (57mm)	2-9/64" (54mm)						V	V	直纹 Rib	厚胶 Thick Tread			V			110kg (240 lbs)	
10"	2-3/4" (65mm)	2-9/64" (54mm)						V	V	直纹 Rib	厚胶 Thick Tread				V	V	115kg (255 lbs)	

[illegible]

[illegible]



空心胎橡胶轮（铁框-正心） Semi-Pneumatic Rubber Wheel with Steel Rim (Centered Hub)

轮径 Wheel Diameter	轮宽 Wheel Width	中宽(含轴承) Hub Length (with bearing)	轴承 Ball Bearing							胎纹 Tread Profile	厚胶/薄胶 Tread Thickness	铁框颜色 Hub Color						荷重 Load
			精密滚珠轴承 Precision ball bearing				A珠 Flanged ball bearing					黑 Black	白 White	红 Red	银灰 Silver	镀锌 Zinc Plated	黄 Yellow	
			12mm	6002 (15mm)	6203 (17mm)	6904 (20mm)	1/2" (12.7mm)	5/8" (15.88mm)	3/4" (19.05mm)									
6"	1-1/2" (37mm)	1-17/32" (39mm)						V	V	直纹 Rib	厚胶 Thick Tread		V	V				25kg (55 lbs)
6"	1-1/2" (37mm)	1-17/32" (39mm)						V	V	钻纹 Diamond	厚胶 Thick Tread		V	V				25kg (55 lbs)
6"	1-1/2" (37mm)	1-27/32" (47mm)						V	V	直纹 Rib	厚胶 Thick Tread		V	V				25kg (55 lbs)
6"	1-1/2" (37mm)	1-27/32" (47mm)						V	V	钻纹 Diamond	厚胶 Thick Tread		V	V				25kg (55 lbs)
6"	1-4/5" (45mm)	2-13/64" (56mm)					V			钻纹 Diamond	厚胶 Thick Tread		V	V				30kg (65 lbs)
7"	1-1/2" (36mm)	1-31/64" (37.5mm)					V	V	V	直纹 Rib	厚胶 Thick Tread		V	V				30kg (65 lbs)
7"	1-1/2" (36mm)	1-31/64" (37.5mm)					V	V	V	钻纹 Diamond	厚胶 Thick Tread		V	V				30kg (65 lbs)
7"	1-1/2" (36mm)	2" (51mm)					V	V	V	直纹 Rib	厚胶 Thick Tread		V	V				30kg (65 lbs)
7"	1-1/2" (36mm)	2" (51mm)					V	V	V	钻纹 Diamond	厚胶 Thick Tread		V	V				30kg (65 lbs)
7"	1-3/4" (44.5mm)	1-31/64" (37.5mm)					V	V	V	钻纹 Diamond	厚胶 Thick Tread		V	V				30kg (65 lbs)
7"	1-3/4" (44.5mm)	2" (51mm)					V	V	V	钻纹 Diamond	厚胶 Thick Tread		V	V				30kg (65 lbs)
8"	1-3/4" (42mm)	1-31/64" (37.5mm)					V	V	V	钻纹 Diamond	厚胶 Thick Tread		V					35kg (80 lbs)
		2" (51mm)					V	V	V	钻纹 Diamond			V	V				35kg (80 lbs)
8"	1-3/4" (43mm)	1-31/64" (37.5mm)					V	V	V	直纹 Rib	厚胶 Thick Tread		V					35kg (80 lbs)
		2" (51mm)					V	V	V	直纹 Rib			V	V				35kg (80 lbs)
10"	1-3/4" (41mm)	1-39/64" (41mm)					V	V	V	直纹 Rib	厚胶 Thick Tread		V	V				45kg (100 lbs)
10"	1-3/4" (41mm)	1-39/64" (41mm)					V	V	V	钻纹 Diamond	厚胶 Thick Tread		V	V				45kg (100 lbs)
10"	2-1/2" (57mm)	1-55/64" (47.3mm)						V	V	直纹 Rib	厚胶 Thick Tread			V				70kg (155 lbs)
10"	2-3/4" (62mm)	2-9/64" (54mm)						V	V	直纹 Rib	厚胶 Thick Tread				V	V		70kg (155 lbs)
10"	3-25/64" (85mm)	2-19/32" (65mm)			V	V		V	V	横纹 Lateral	厚胶 Thick Tread			V	V	V	V	90kg (200 lbs)
12"	1-3/4" (43mm)	1-39/64" (56mm)					V			直纹 Rib	厚胶 Thick Tread			V				35kg (80 lbs)



空心胎橡胶轮（铁框-偏心） Semi-Pneumatic Rubber Wheel with Steel Rim (Offset Hub)

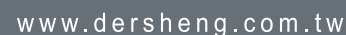
轮径 Wheel Diameter	轮宽 Wheel Width	中宽(含轴承) Hub Length (with bearing)	轴承 Ball Bearing							胎纹 Tread Profile	厚胶/薄胶 Tread Thickness	铁框颜色 Hub Color						荷重 Load
			精密滚珠轴承 Precision ball bearing				A珠 Flanged ball bearing					黑 Black	白 White	红 Red	银灰 Silver	镀锌 Zinc Plated	黄 Yellow	
			12mm	6002 (15mm)	6203 (17mm)	6904 (20mm)	1/2" (12.7mm)	5/8" (15.88mm)	3/4" (19.05mm)									
6"	1-1/2" (37mm)	1-29/64" (37mm)					V	V	V	直纹 Rib	厚胶 Thick Tread		V	V				25kg (55 lbs)
6"	1-1/2" (37mm)	1-29/64" (37mm)					V	V	V	钻纹 Diamond	厚胶 Thick Tread		V	V				25kg (55 lbs)
7"	1-1/2" (36mm)	1-31/64" (37.5mm)					V	V	V	直纹 Rib	厚胶 Thick Tread		V	V				30kg (65 lbs)
7"	1-1/2" (36mm)	1-31/64" (37.5mm)					V	V	V	钻纹 Diamond	厚胶 Thick Tread		V	V				30kg (65 lbs)
7"	1-3/4" (44.5mm)	1-31/64" (37.5mm)					V	V	V	钻纹 Diamond	厚胶 Thick Tread		V	V				30kg (65 lbs)
8"	1-3/4" (42mm)	1-31/64" (37.5mm)					V	V	V	钻纹 Diamond	厚胶 Thick Tread		V	V				35kg (80 lbs)
		1-1/2" (38mm)		V					钻纹 Diamond			V					35kg (80 lbs)	
8"	1-3/4" (43mm)	1-31/64" (37.5mm)					V	V	V	直纹 Rib	厚胶 Thick Tread		V	V				35kg (80 lbs)
		1-1/2" (38mm)		V					直纹 Rib			V					35kg (80 lbs)	
10"	1-3/4" (41mm)	1-39/64" (41mm)					V	V	V	直纹 Rib	厚胶 Thick Tread		V	V				45kg (100 lbs)
10"	2-1/2" (57mm)	1-55/64" (47.3mm)						V	V	直纹 Rib	厚胶 Thick Tread			V				70kg (155 lbs)
10"	3-25/64" (85mm)	2-19/32" (65mm)			V	V				横纹 Lateral	厚胶 Thick Tread			V	V	V	V	80kg (175 lbs)

[illegible]



空心胎橡胶轮（塑框-偏心） Semi-Pneumatic Rubber Wheel with Plastic Rim (Offset Hub)

轮径 Wheel Diameter	轮宽 Wheel Width	中宽 (含轴承) Hub Length (with bearing)	中管 Plain Bearing														双轴承 Double Ball Bearing				胎纹 Tread Profile	厚度/薄胶 Tread Thickness	塑框颜色 Hub Color												塑框形状								荷重 Load
			10.2 mm	10.5 mm	12.7 mm	12.8 mm	12.85 mm	12.9 mm	13 mm	14.5 mm	14.8 mm	15.1 mm	16 mm	16.2 mm	17.5 mm	41.8 mm	6004 (20 mm)	6201 (12.75 mm)	6202 (15.88 mm)	6202 (20 mm)			深灰 Dark Gray	浅灰 Light Gray	冷灰 Cool Gray	灰 Gray	黄 Yellow	黑 Black	白 White	红 Red	绿 Green	蓝 Blue	五风	三爪	五爪	三叉	五叉	十叉	十二叉	六风	其他		
6"	1-1/2" (33mm)	1-13/64" (30.25 mm)						V												方块纹 Stud	厚胶 Thick Tread	V	V											V								25kg (55 lbs)	
6"	1-1/2" (37mm)	1-3/8" (34.5 mm)				V														钻纹 Diamond	厚胶 Thick Tread						V												V		25kg (55 lbs)		
6"	1-1/2" (37.5 mm)	1-39/64" (40.5 mm)								V										G-2纹 G-2	厚胶 Thick Tread				V						V										25kg (55 lbs)		
6"	1-1/2" (38mm)	1-3/8" (34.5 mm)				V														光面 Smooth	厚胶 Thick Tread						V			V											25kg (55 lbs)		
6.17"	1-1/2" (37.3 mm)	1-7/8" (47.2 mm)		V																齿纹 Gear	厚胶 Thick Tread				V										V						25kg (55 lbs)		
7"	1-1/2" (38mm)	1-19/64" (32.5 mm)															V			钻纹 Diamond	薄胶 Regular Tread					V									V						30kg (65 lbs)		
7"	1-1/2" (38mm)	1-25/64" (34.9 mm)				V														钻纹 Diamond	薄胶 Regular Tread	V													V						30kg (65 lbs)		
7"	1-1/2" (38mm)	1-25/64" (34.9 mm)				V														光面 Smooth	薄胶 Regular Tread					V								V							30kg (65 lbs)		
7"	1-1/2" (38mm)	1-7/16" (36mm)															V			钻纹 Diamond	薄胶 Regular Tread			V		V										V					30kg (65 lbs)		
7"	1-1/2" (38mm)	1-7/16" (36mm)			V															X纹 X Profile	薄胶 Regular Tread				V	V												V			30kg (65 lbs)		
7"	1-1/2" (38mm)	1-41/64" (39mm)							V											钻纹 Diamond	薄胶 Regular Tread				V										V						30kg (65 lbs)		
7"	1-1/2" (38mm)	1-41/64" (41mm)								V										钻纹 Diamond	薄胶 Regular Tread					V				V											30kg (65 lbs)		
8"	1-3/4" (41.5 mm)	1-25/64" (34.9 mm)				V														粗齿纹 Gear	厚胶 Thick Tread						V								V						35kg (80 lbs)		
8"	1-3/4" (41.5 mm)	1-41/64" (39mm)							V											粗齿纹 Gear	厚胶 Thick Tread						V								V						35kg (80 lbs)		
8"	1-3/4" (42mm)	1-41/64" (39mm)							V											直纹 Rib	厚胶 Thick Tread						V								V						35kg (80 lbs)		
8"	1-3/4" (43mm)	1-3/32" (27mm)						V									V			方块纹 Stud	厚胶 Thick Tread	V				V						V									35kg (80 lbs)		
8"	1-3/4" (43mm)	1-5/16" (33mm)															V			钻纹 Diamond	厚胶 Thick Tread				V		V										V				35kg (80 lbs)		
8"	1-3/4" (43mm)	1-25/64" (34.9 mm)				V														钻纹 Diamond	厚胶 Thick Tread						V									V					35kg (80 lbs)		
8"	1-3/4" (43mm)	1-25/64" (34.9 mm)				V														齿纹 Gear	厚胶 Thick Tread						V									V					35kg (80 lbs)		
8"	1-3/4" (43mm)	1-27/64" (36mm)															V			直纹 Rib	薄胶 Regular Tread		V				V									V					35kg (80 lbs)		
8"	1-3/4" (43mm)	1-15/32" (37mm)															V			钻纹 Diamond	厚胶 Thick Tread				V					V											35kg (80 lbs)		
8"	1-3/4" (43mm)	1-33/64" (38mm)				V														钻纹 Diamond	厚胶 Thick Tread				V				V							V					35kg (80 lbs)		
8"	1-3/4" (43mm)	1-33/64" (38mm)				V														钻纹 Diamond	厚胶 Thick Tread					V			V							V					35kg (80 lbs)		
8"	1-3/4" (43mm)	1-41/64" (39mm)															V			钻纹 Diamond	厚胶 Thick Tread				V											V					35kg (80 lbs)		
8"	1-3/4" (43mm)	1-41/64" (39mm)							V											钻纹 Diamond	厚胶 Thick Tread				V	V	V									V					35kg (80 lbs)		
8"	1-3/4" (43mm)	1-41/64" (40.9 mm)				V														钻纹 Diamond	厚胶 Thick Tread						V									V					35kg (80 lbs)		
8"	1-3/4" (44mm)	1-25/64" (34.9 mm)				V														光面 Smooth	厚胶 Thick Tread						V								V						35kg (80 lbs)		
8"	1-3/4" (44mm)	1-27/64" (36mm)															V			钻纹 Diamond	薄胶 Regular Tread			V		V											V				35kg (80 lbs)		

[illegible]