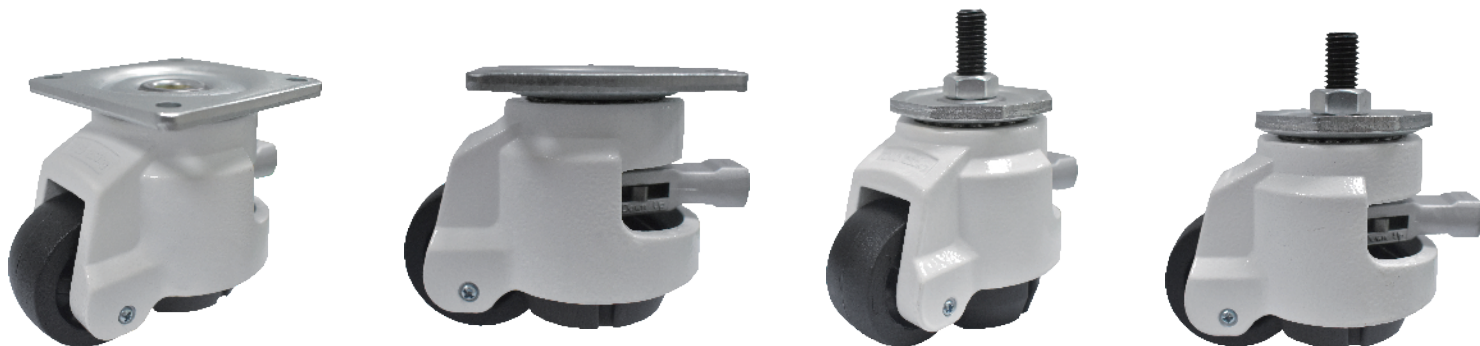


**1169-1 Series****水平调节轮系列(联动把手款)****Height Adjustment Caster with adjustable handle**

- 可以藉由联动把手的转动，轻易调整角轮高度，使设备达到水平状态。
水平调节轮系列脚轮适用于电气自动化设备类、半导体设备类、医疗机械类、其他机台、机柜设备类，适用于3T以下的设备支撑要求，具有重型支撑、水平调节、可移动、环保清洁等专业特点，可根据客户需求提供客製化服务，详情请洽工厂。
- By turning the handle, one can easily move up or down the caster to reach the desired horizontal levelness, on the equipment. The height adjustment caster with adjustable handle series casters are suitable for electrical automation equipment, semiconductor equipment, medical machinery, other machine tools, and cabinet equipment. They are suitable for equipment support requirements below 3 tons, with professional features such as heavy-duty support, horizontal adjustment, mobility, and environmentally friendly cleaning. Customization services are available according to customer needs. For details, please contact the factory.

载重 Load
250-750 kg

**» 輪子選項 Wheel Options**

PA+纤轮
PA+ Glass Fiber wheel





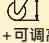

» 底板规格 TOP PLATE SIZE AND BOLT HOLE SPACING

规格 Size	底板尺寸 Top Plate Size	底板孔距 Bolt Hole Spacing	安装尼帽尺寸 Attaching Bolt Size
60F	73 x 73 mm (2-7/8" x 2-7/8")	58 x 58 mm (2-1/4" x 2-1/4")	M6
80F	90 x 90mm (3-1/2" x 3-1/2")	70 x 70 mm (2-3/4" x 2-3/4")	M8
100F	97 x 97mm (3-7/8" x 3-7/8")	70 x 70 mm (2-3/4" x 2-3/4")	M10

» 丝扣规格 THREADED STEM SPECIFICATION

规格 Size	丝扣牙径 X 长度 - 牙距 Threaded Size	规格 Size	丝扣牙径 X 长度 - 牙距 Threaded Size
60S	M12x40-P1.75	80S、100S	M14x40-P2



规格 Size	 轮径x轮宽 DiameterxWidth	 载重 Load	 材质 Material	型号 Item No.			 轴承 Bearing	 总高+可调高度 Overall Height	 回旋半径 Swivel radius
				固定 Fixed	活动 Swivel	刹车 Brake			
60	50mm x 25mm (2" x 1")	250kgs (551 lbs)	PA+纤轮 PA+ Glass Fiber wheel	—	1169-0200-07-2	—	无 N/A	86+10mm (3-3/8")	63mm
80	60mm x 32mm (2-1/2" x 1-1/4")	500kgs (1102 lbs)	PA+纤轮 PA+ Glass Fiber wheel	—	1169-0250-07-2	—		106+10mm (4-1/8")	75mm
100	75mm x 32mm (3" x 1-1/4")	750kgs (1653lbs)	PA+纤轮 PA+ Glass Fiber wheel	—	1169-0300-07-2	—		120+12mm (4-3/4")	90.5mm

使用标准

*4pcs脚轮支撑承重标准为单个脚轮承重x2

**脚轮行走状态应在平整地面、行走速度≤1km/h，短距离行走。

Using standard:

*The load-bearing standard for 4pcs caster support is twice the load-bearing capacity of a single caster.

** Dynamic loading should be on a flat surface, walking speed ≤ 1km/h, short-distance walking.